

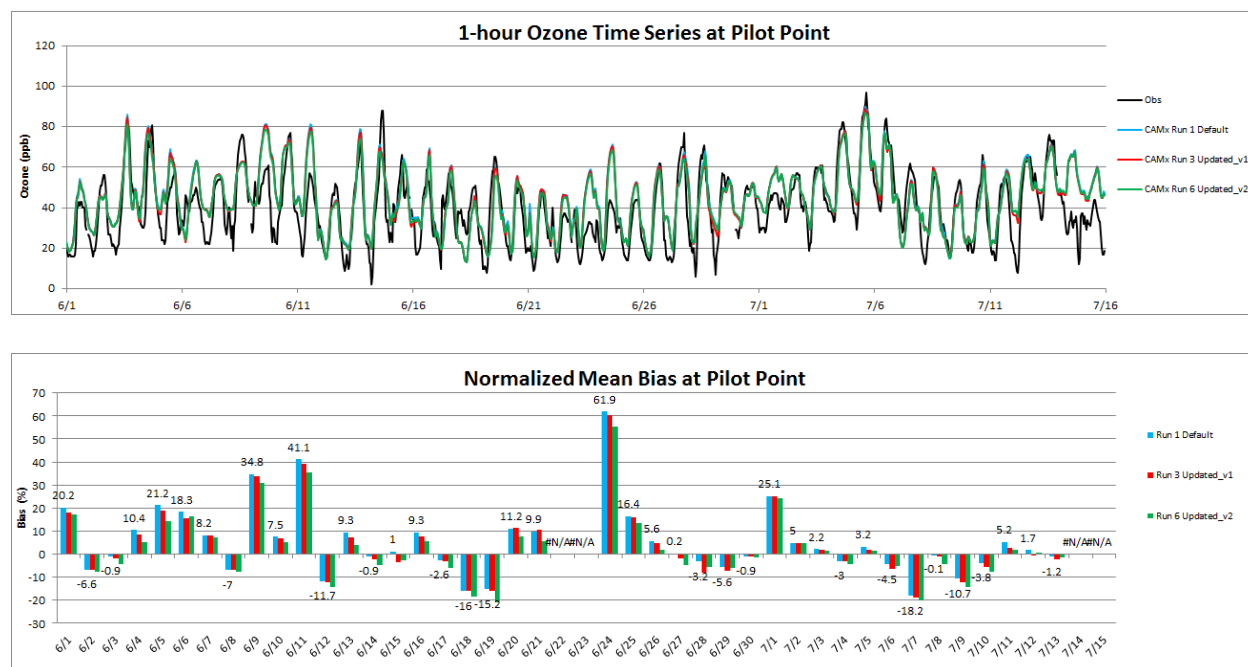
APPENDIX C

CAMx Surface Ozone Model Performance Evaluation

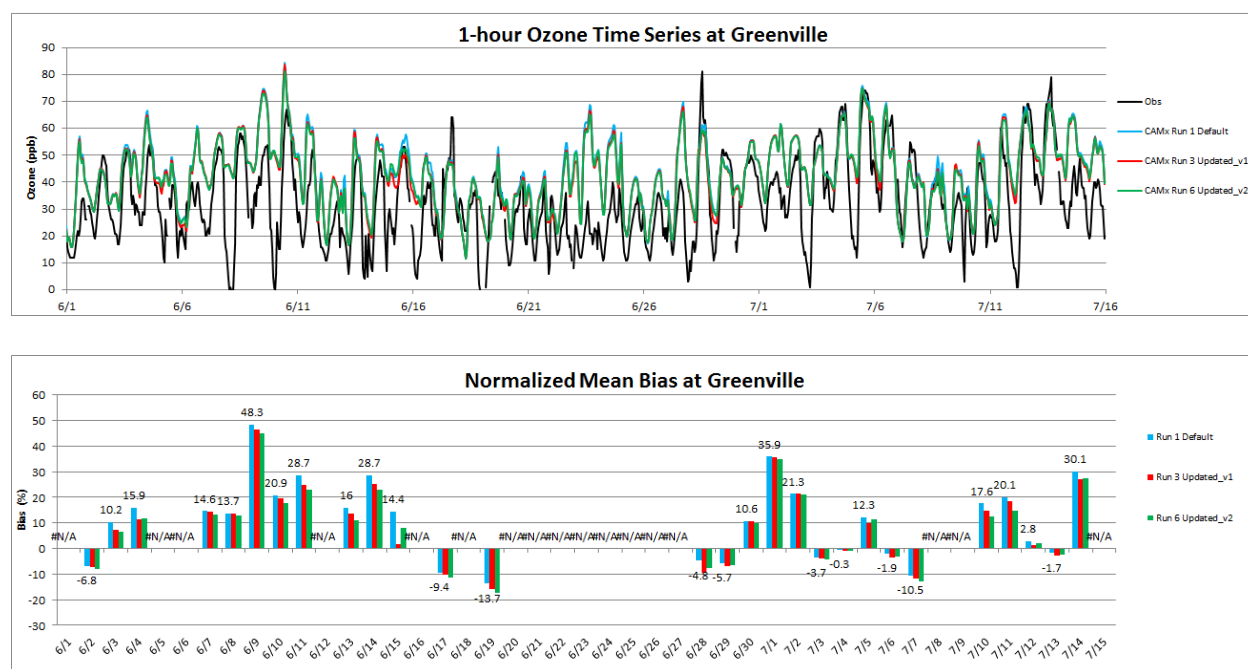
Appendix C. CAMx Surface Ozone Model Performance Evaluation

Evaluation of CAMx Surface Layer Ozone Performance at TCEQ CAMS in Texas

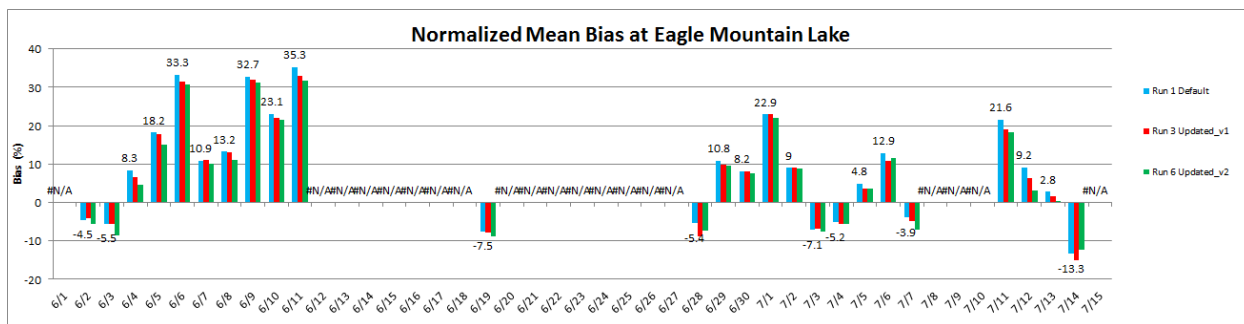
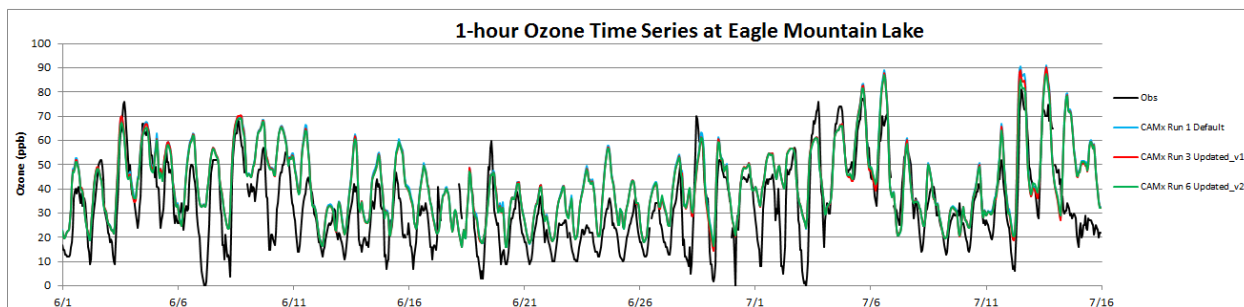
Pilot Point



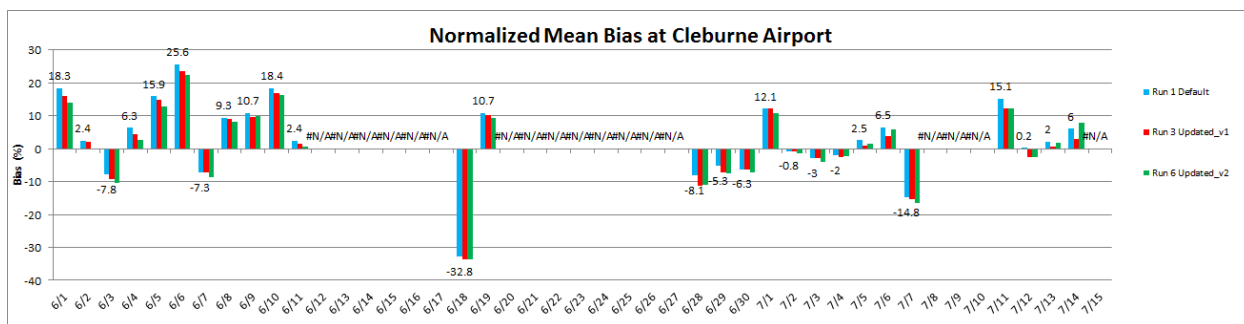
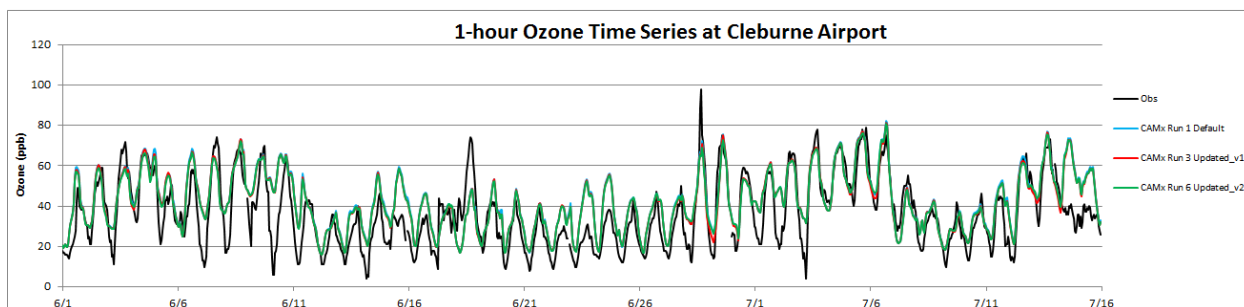
Greenville



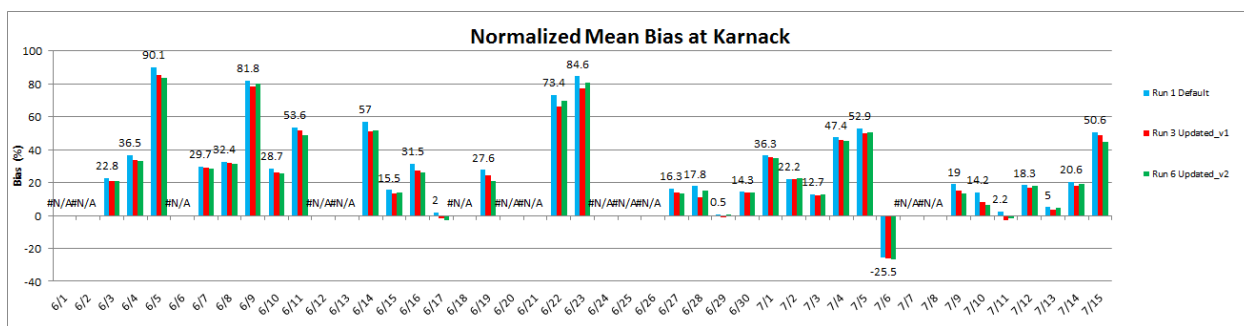
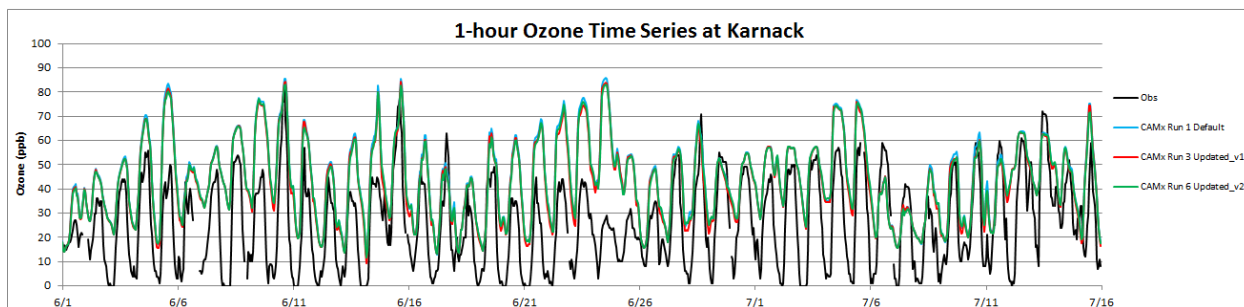
Eagle Mountain Lake



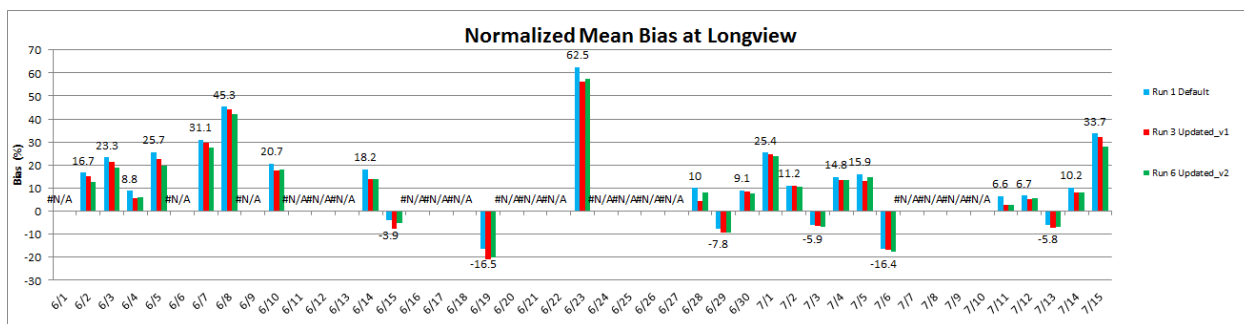
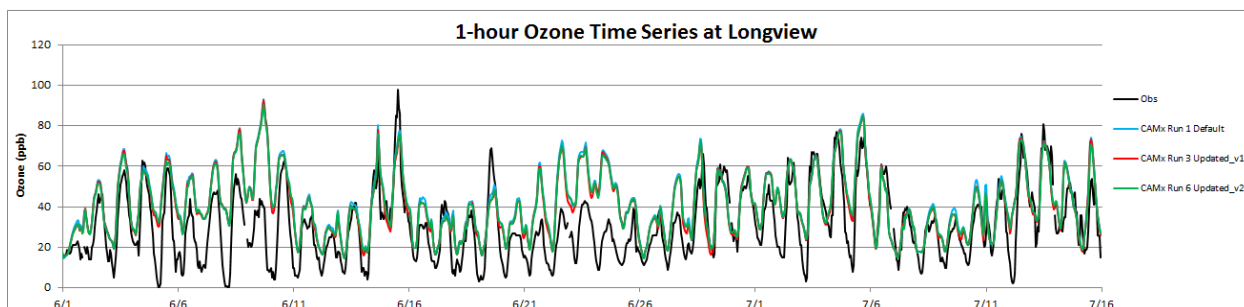
Cleburne



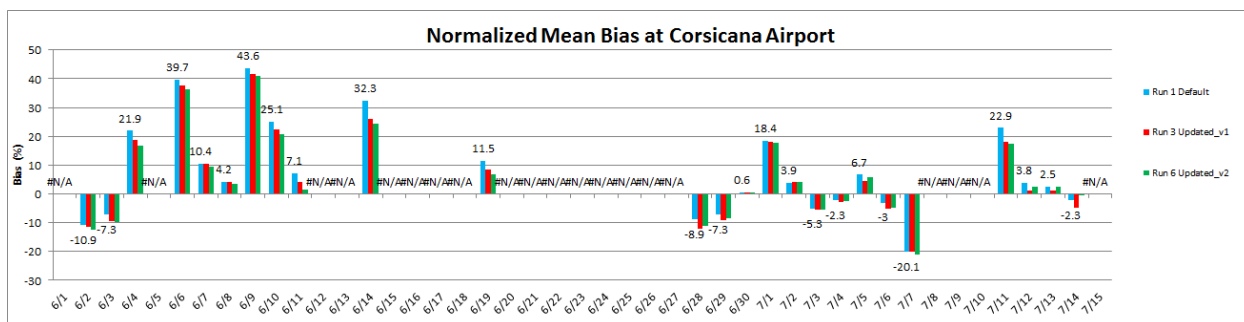
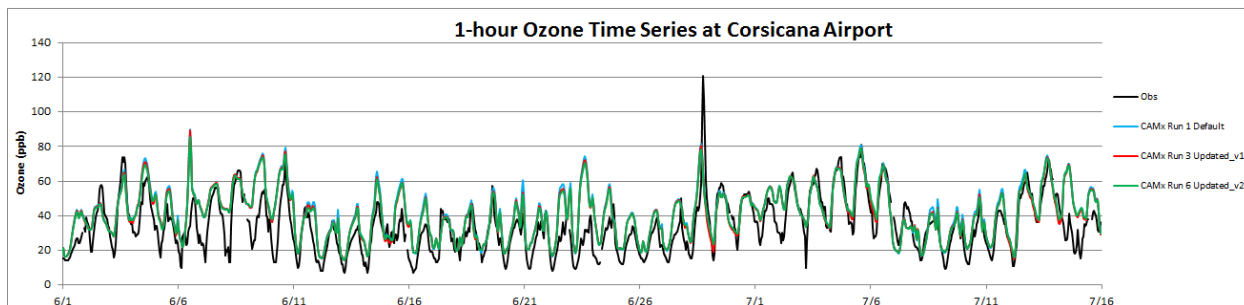
Karnack



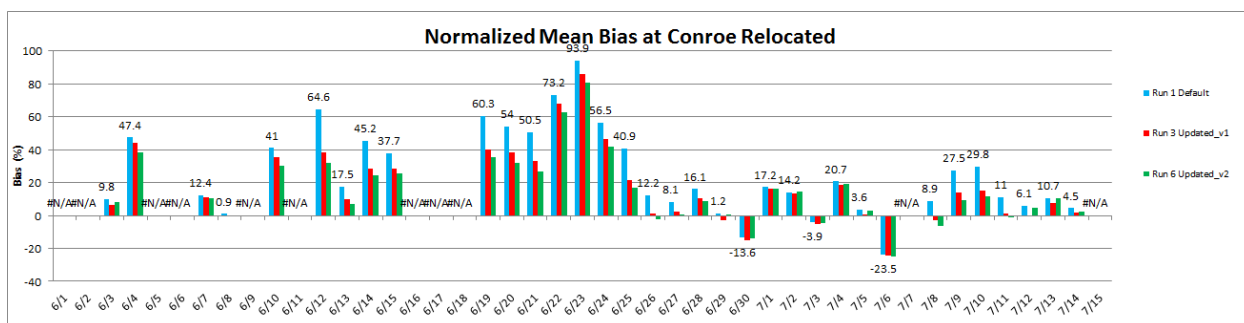
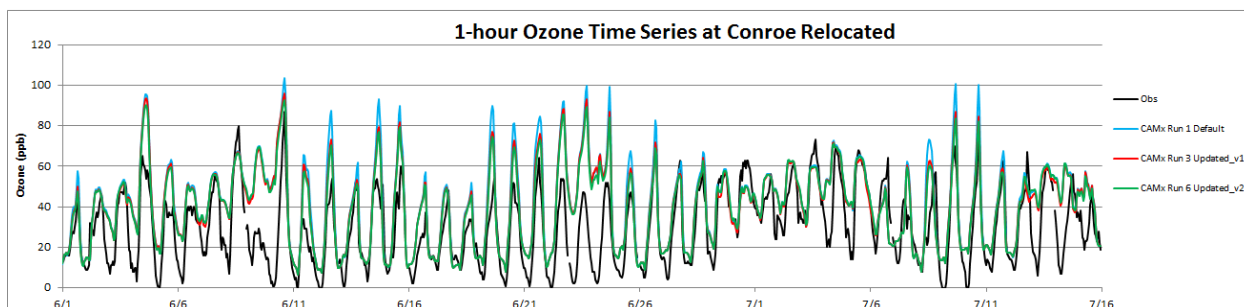
Longview



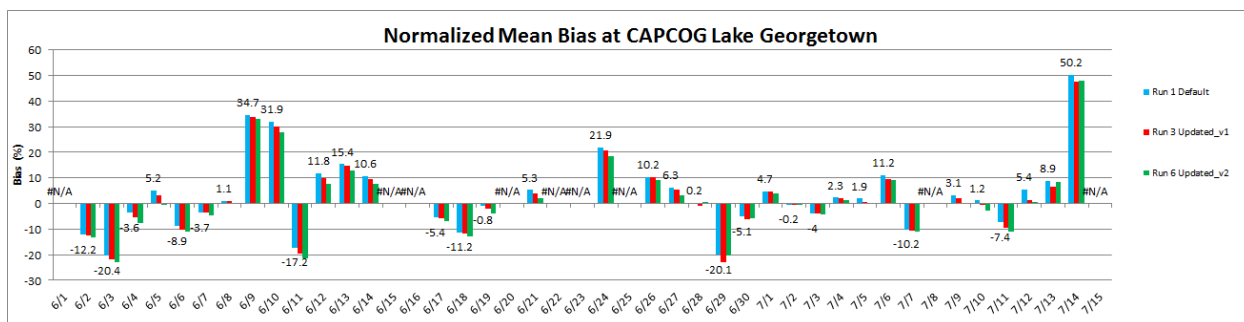
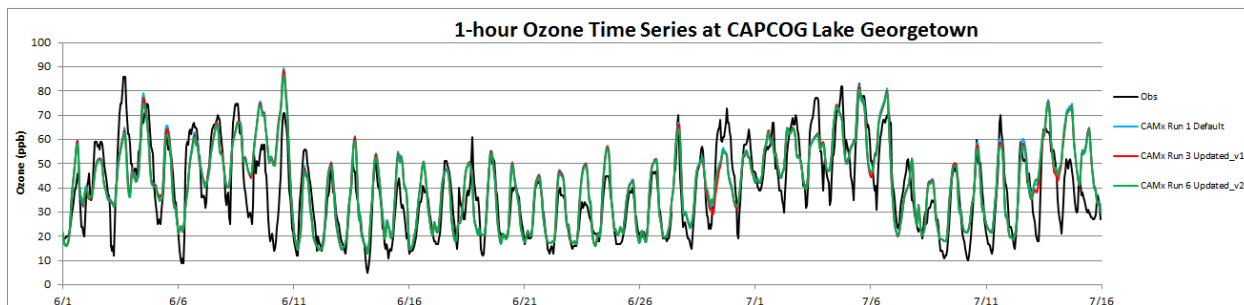
Corsicana



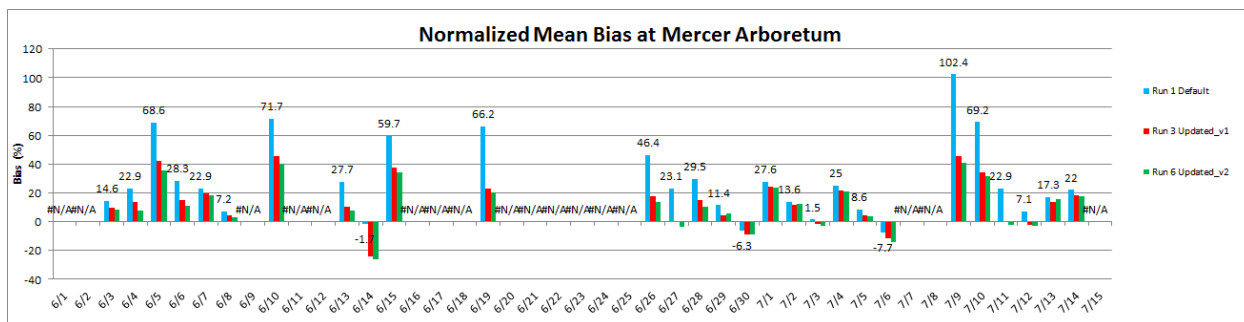
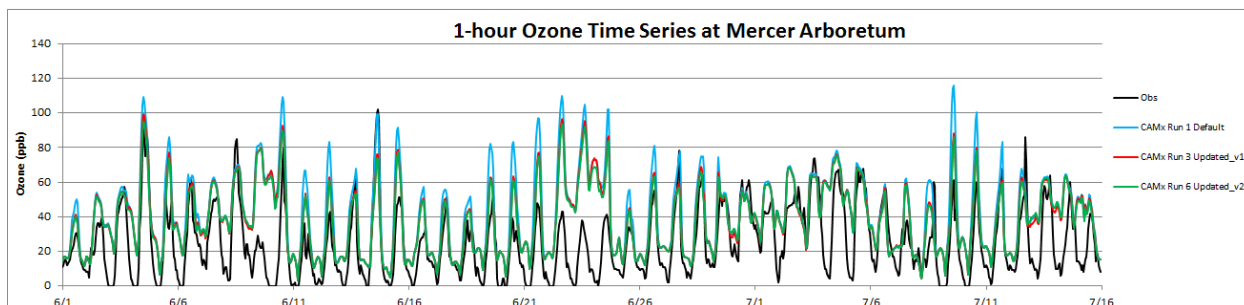
Conroe Relocated



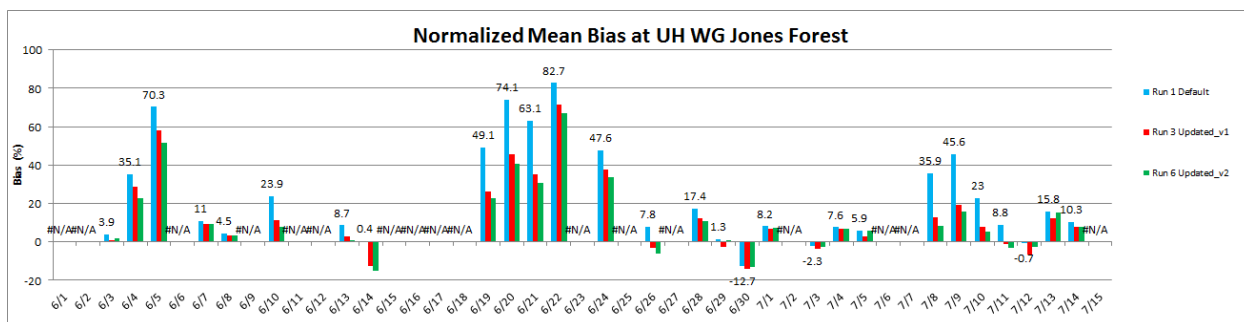
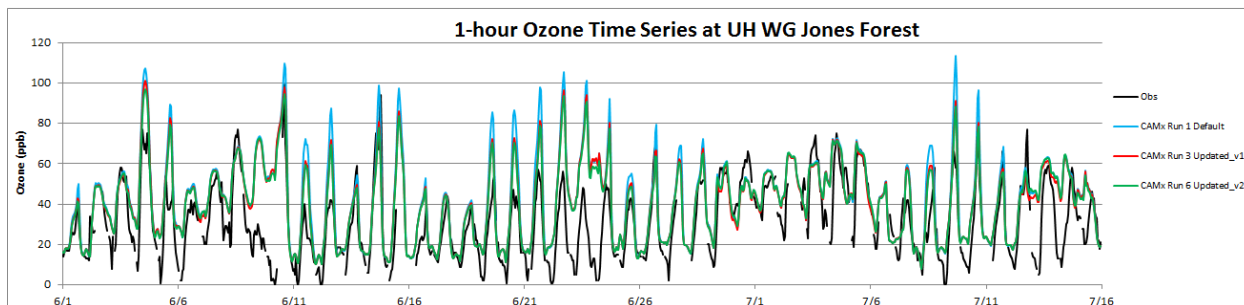
Lake Georgetown



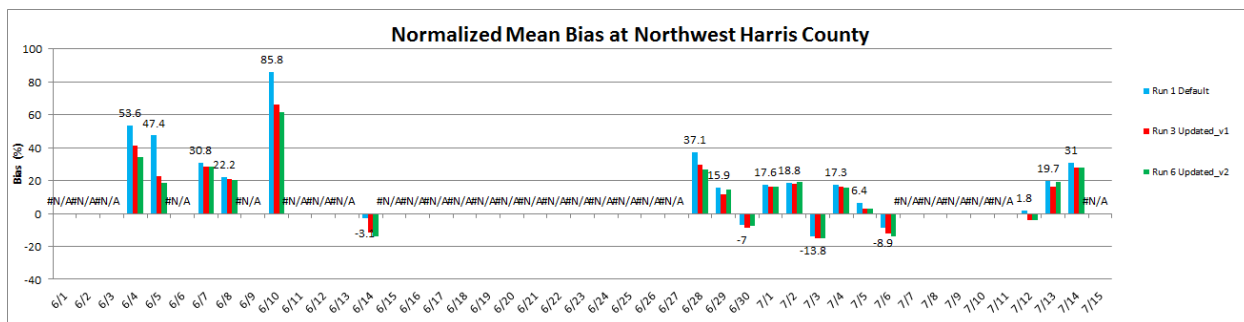
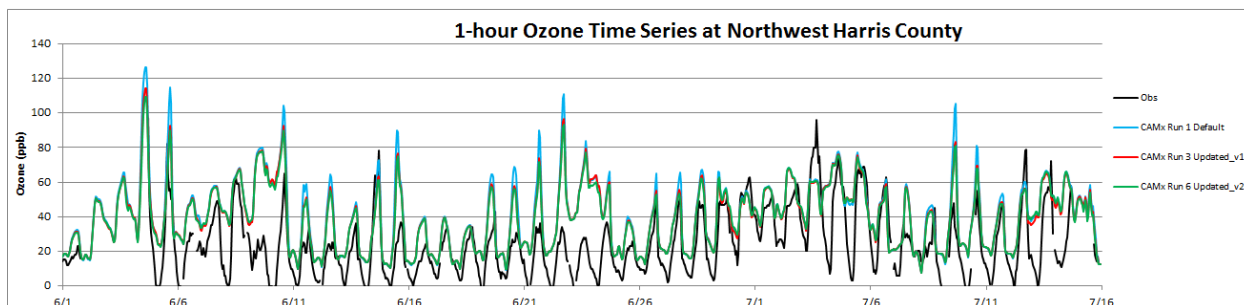
Mercer Arboretum



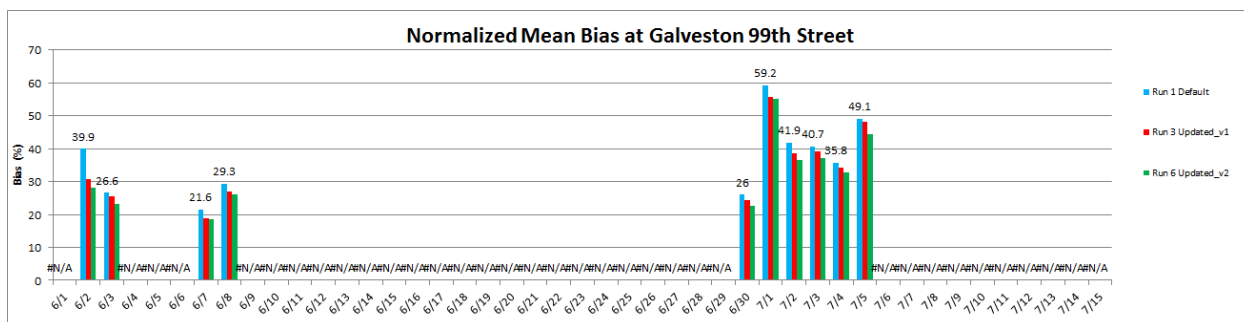
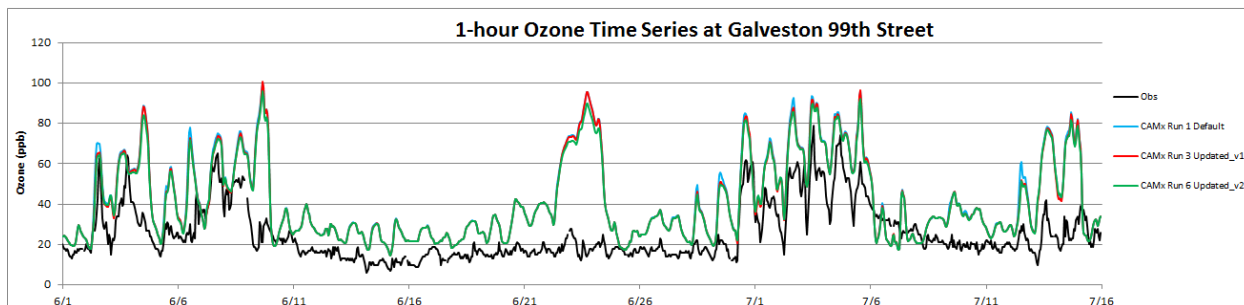
UH WG Jones Forest



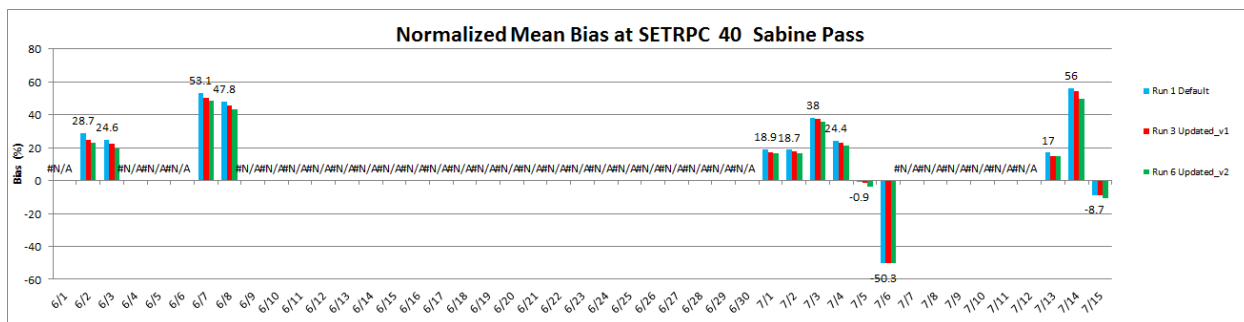
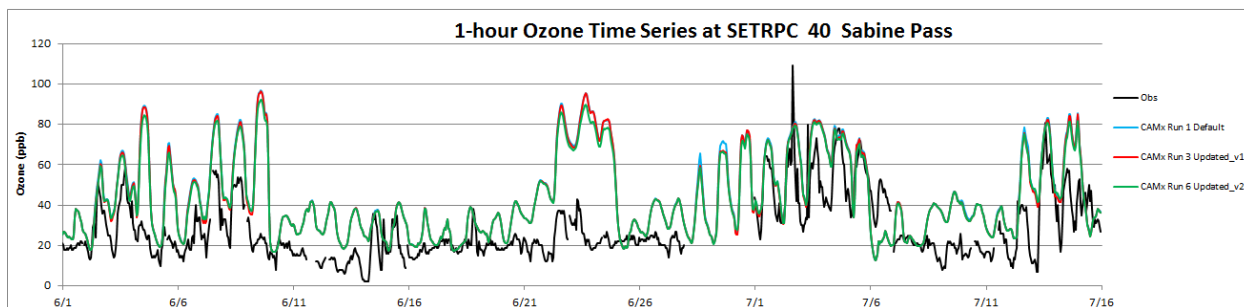
NW Harris County



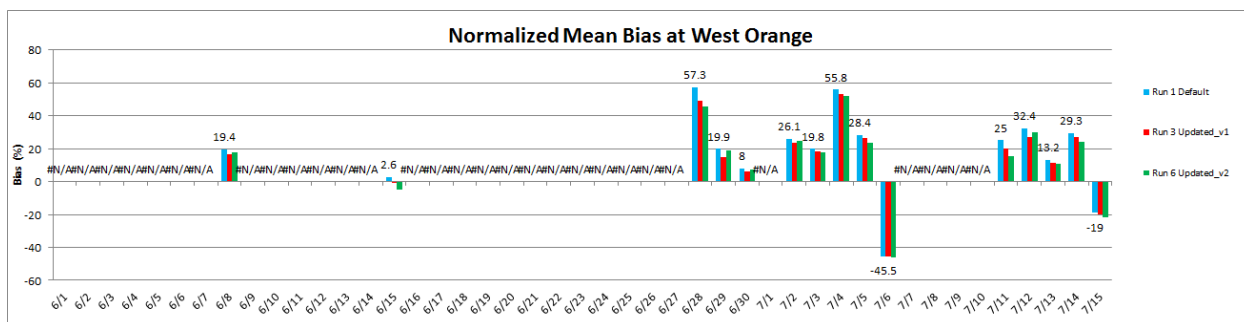
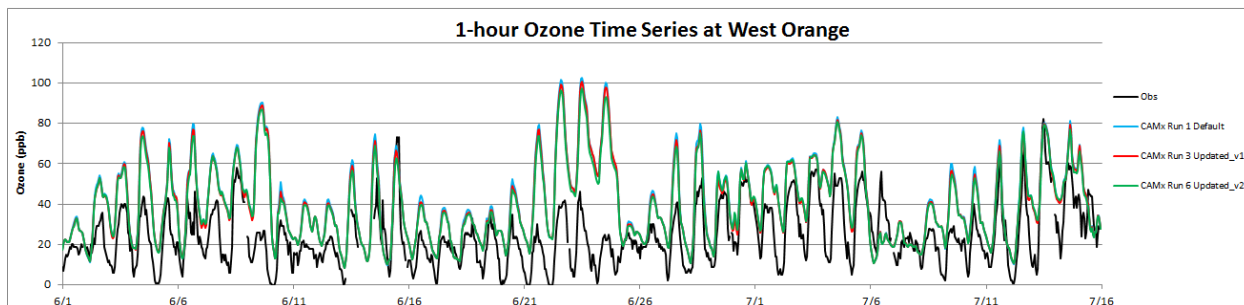
Galveston



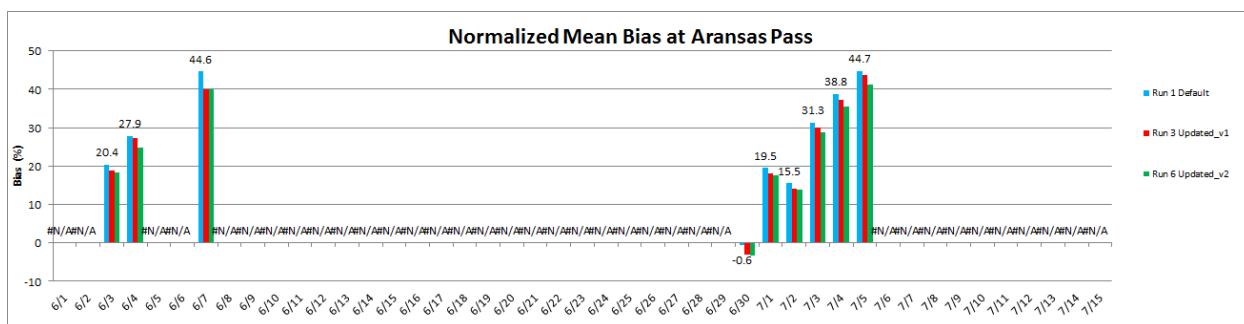
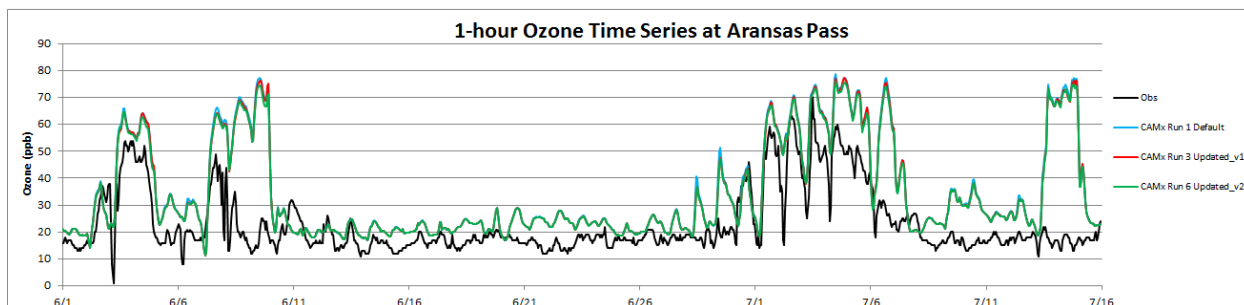
Sabine Pass



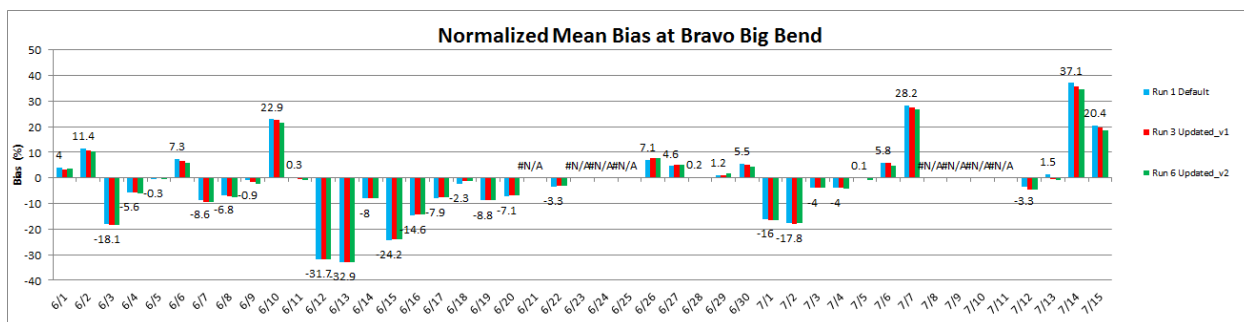
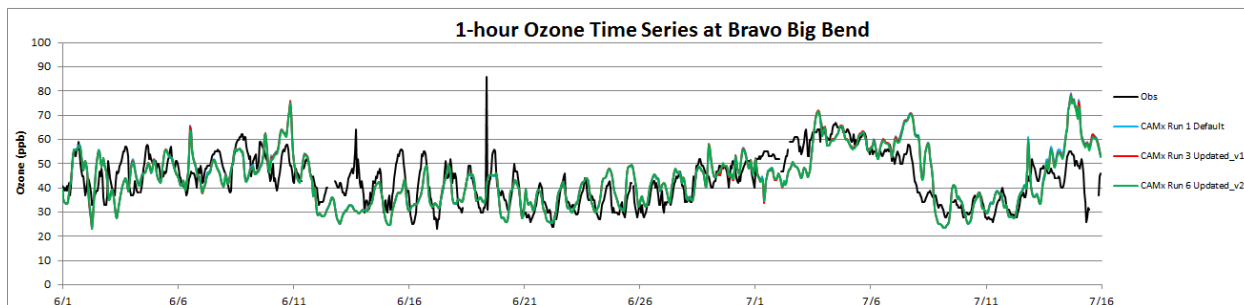
West Orange



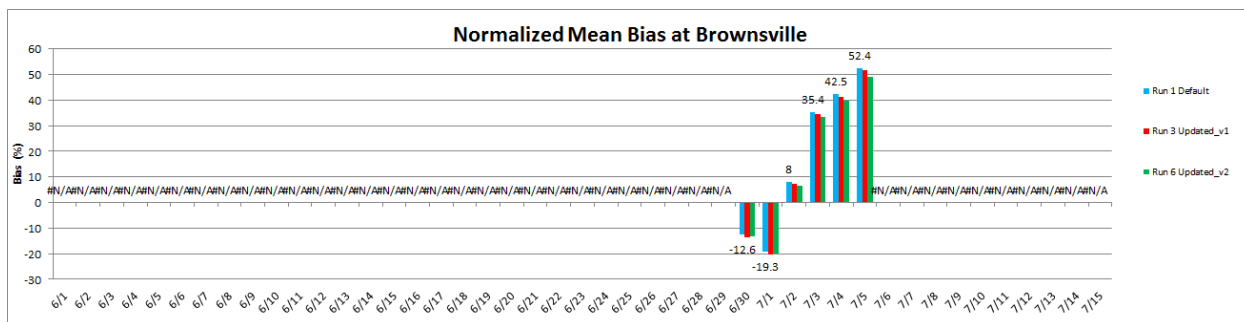
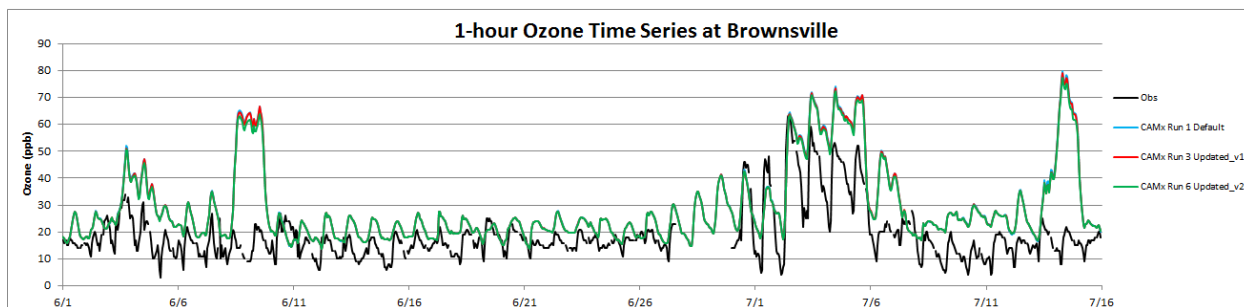
Aransas Pass



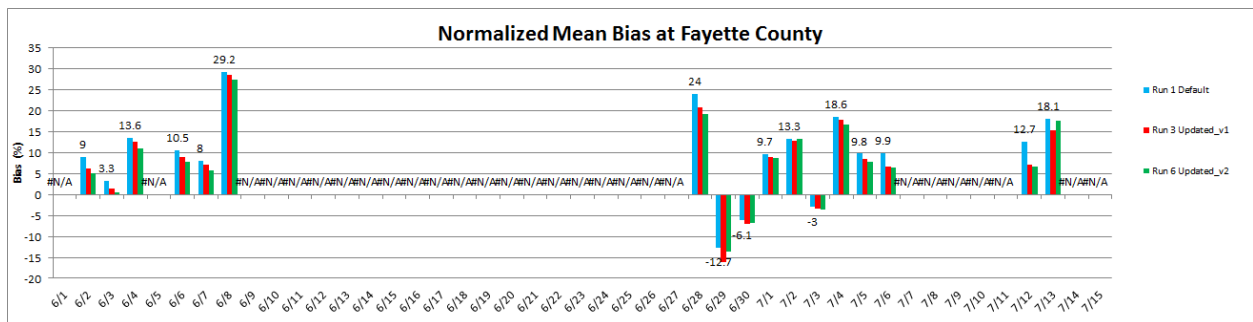
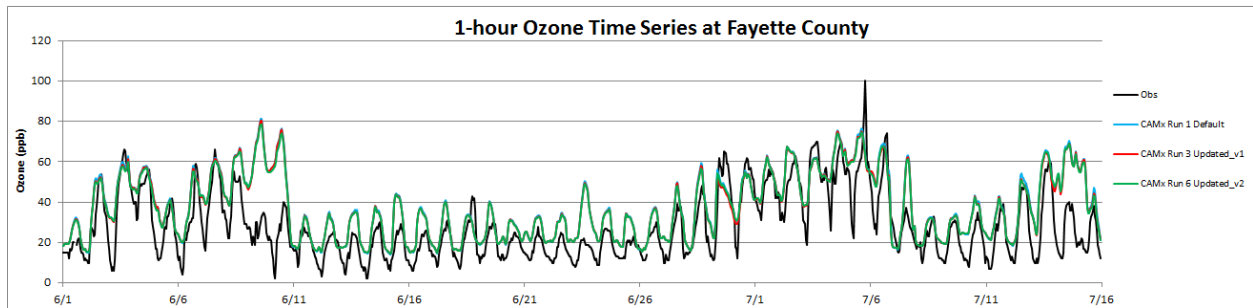
Bravo Big Bend



Brownsville

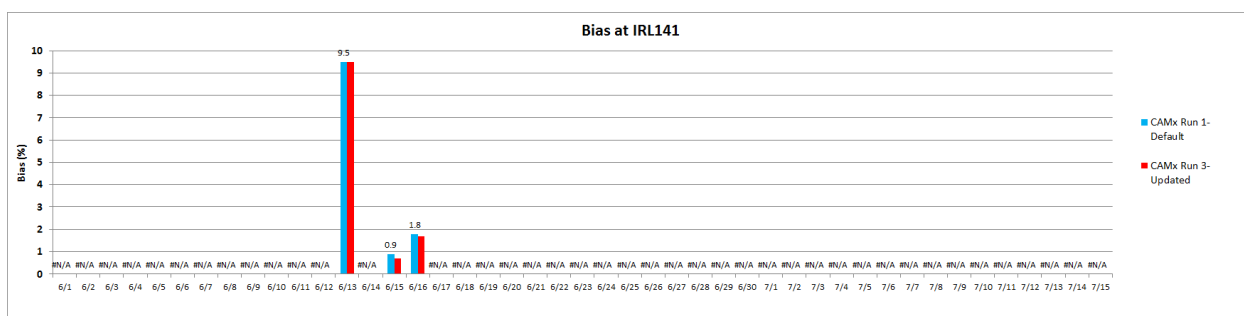
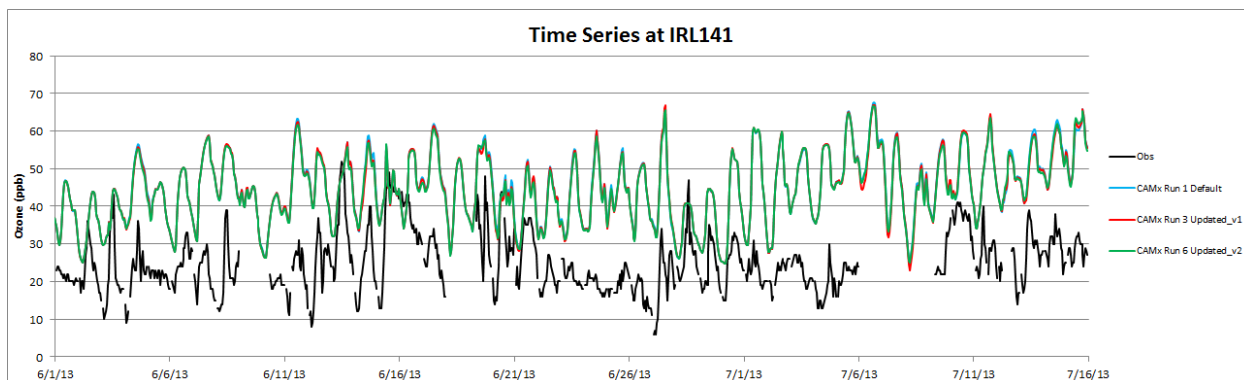


Fayette County

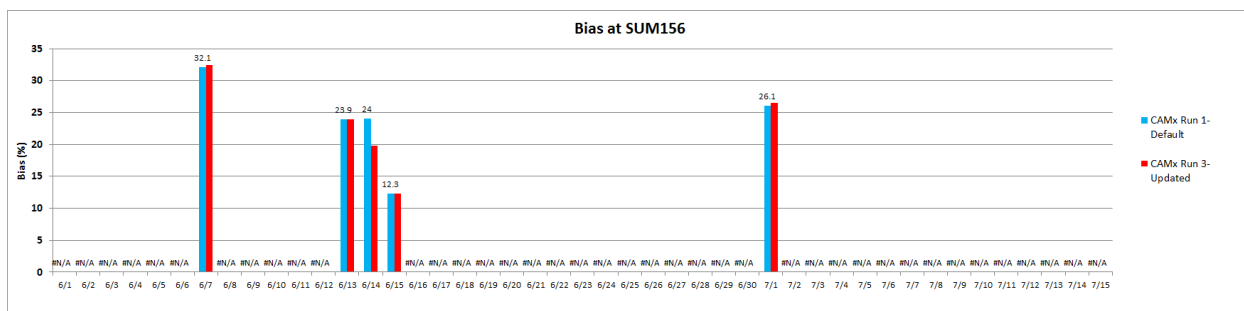
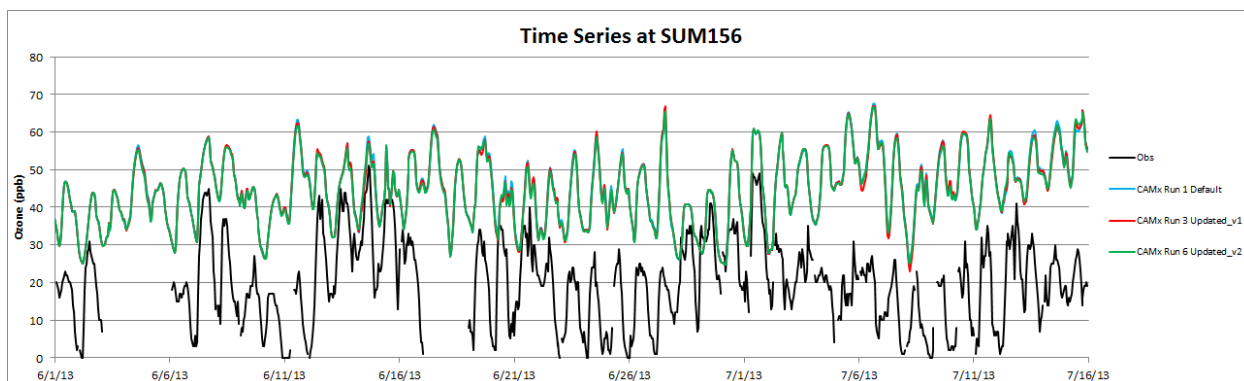


Evaluation of CAMx Surface Layer Ozone Performance at CASTNet Sites in the 12 km Domain

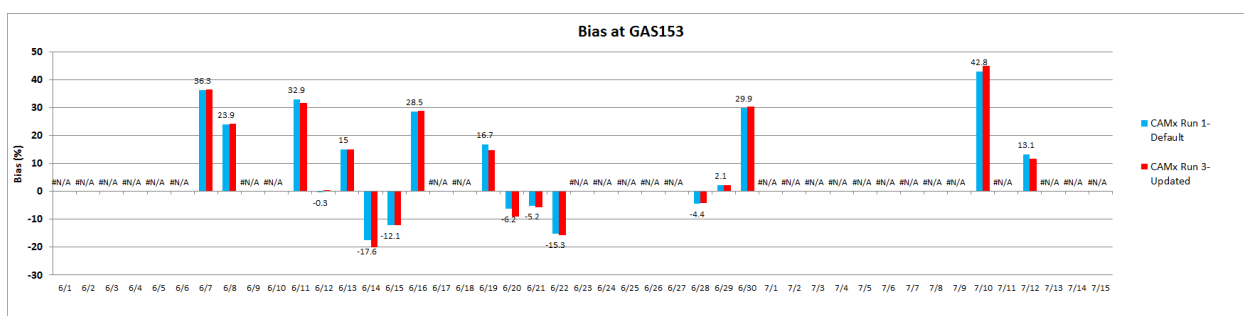
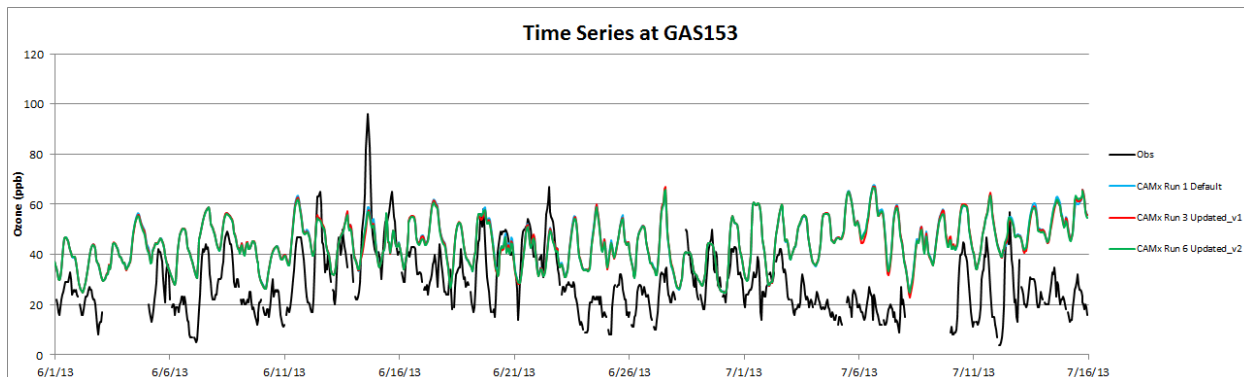
IRL141 (East Coast of Florida)



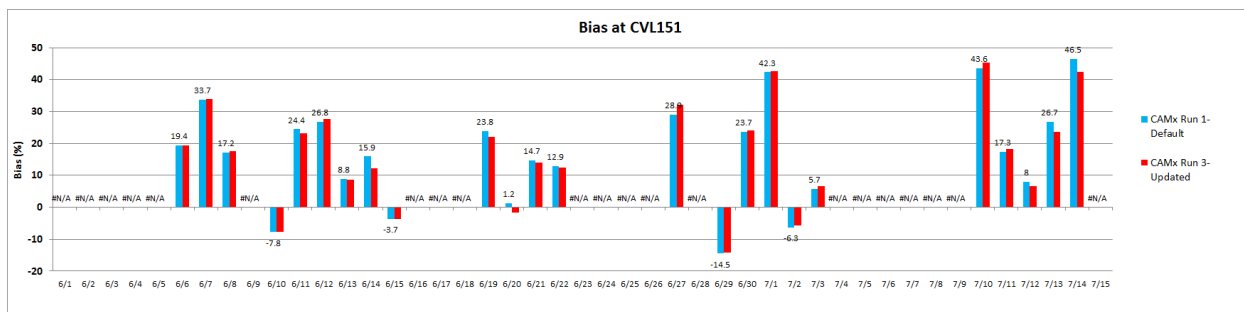
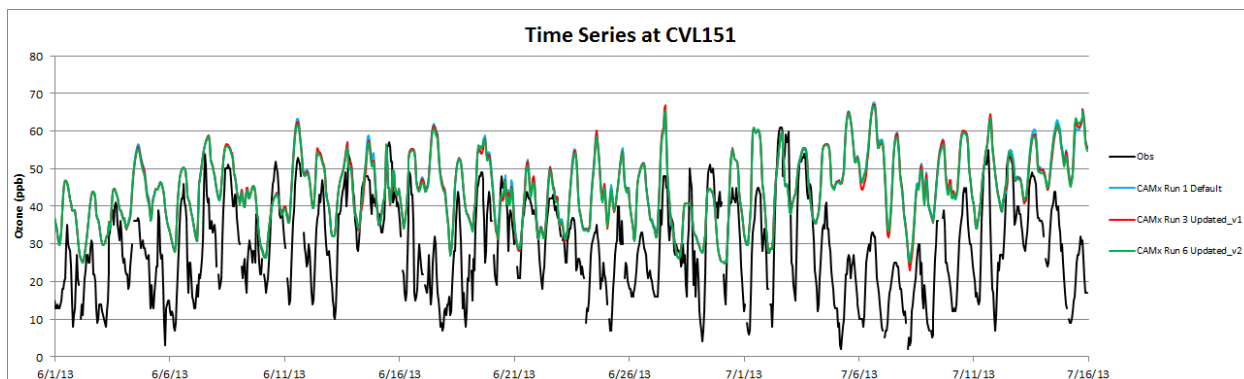
SUM156 (Florida Panhandle)



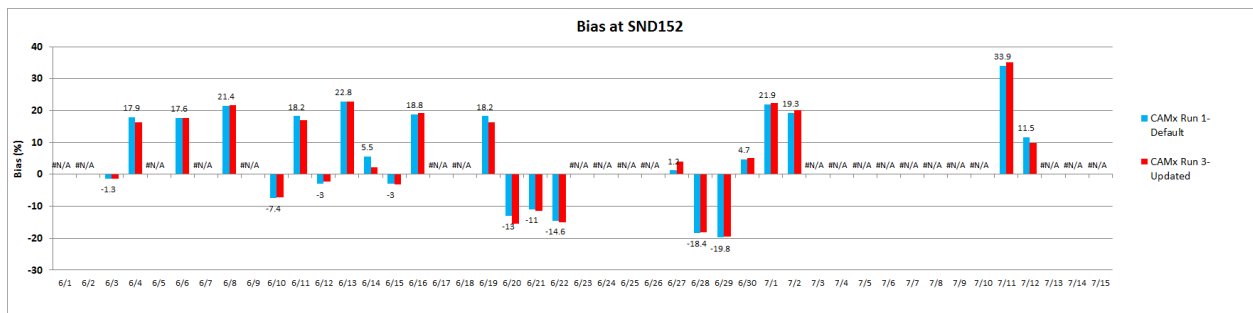
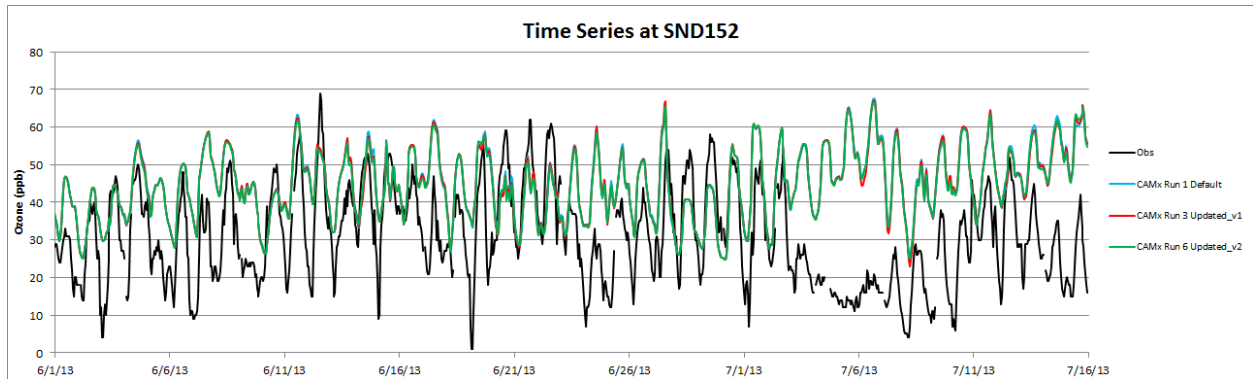
GAS153 (Georgia)



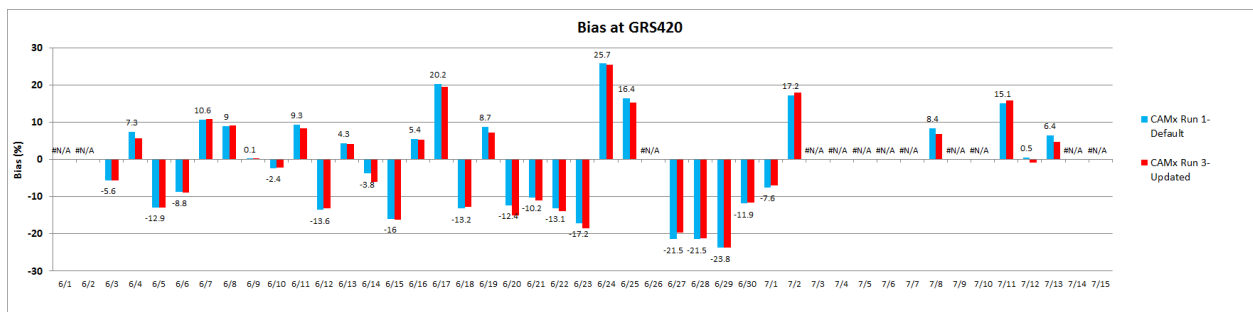
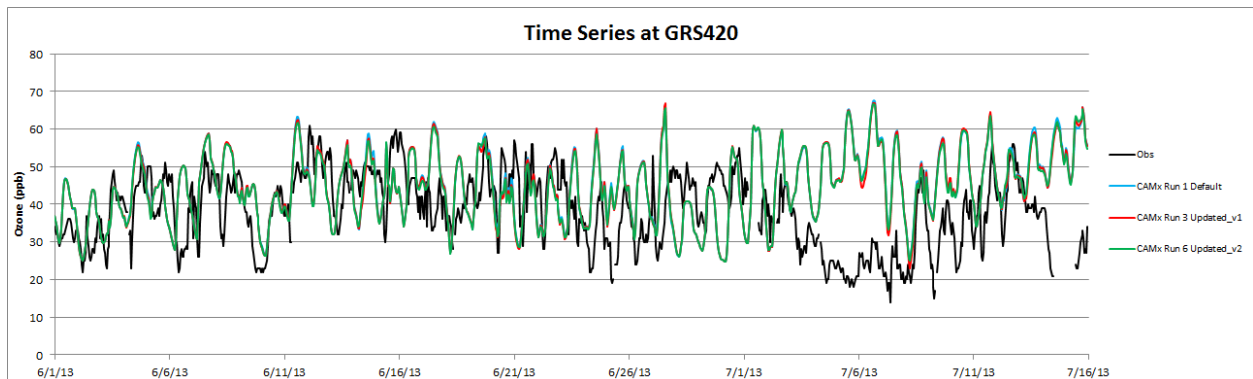
CVL151 (Mississippi)



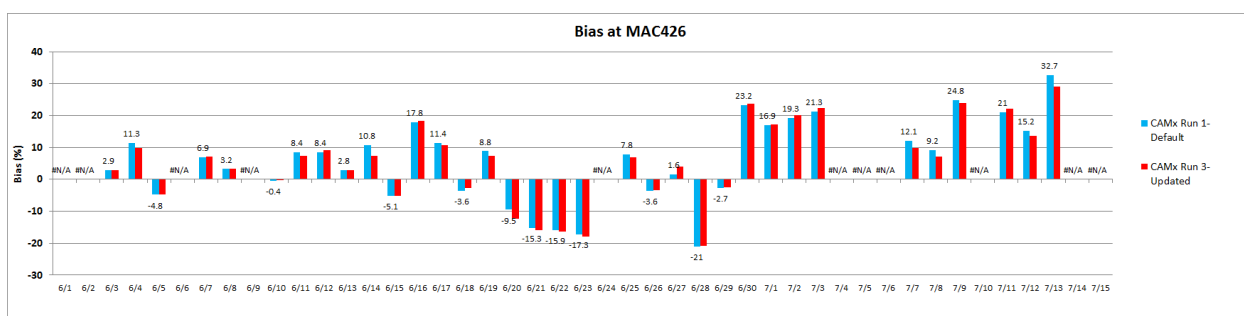
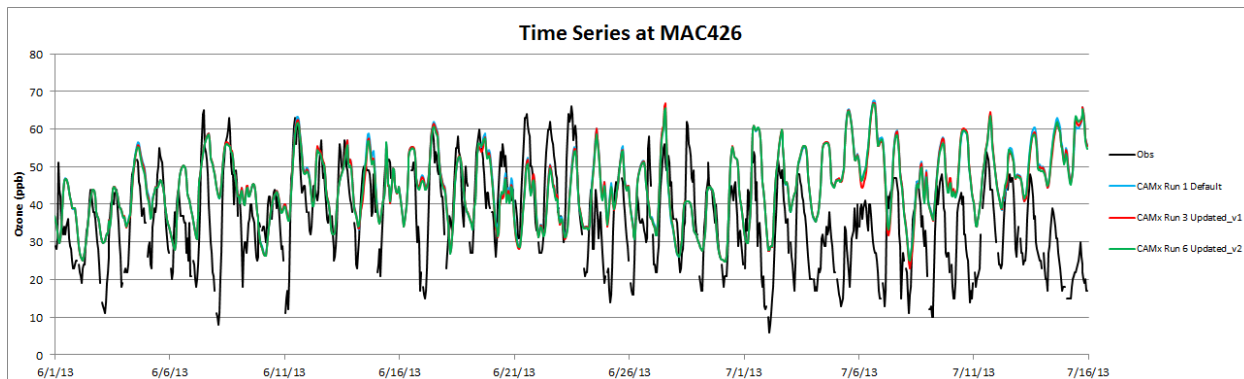
SND152 (Western North Carolina)



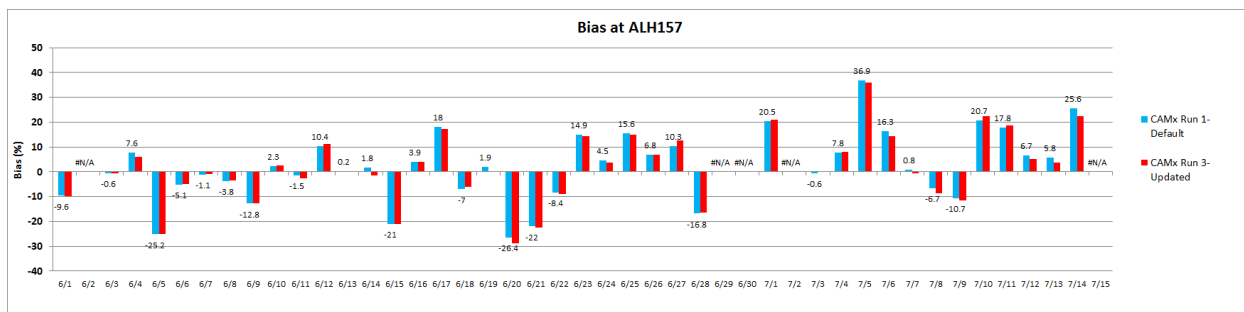
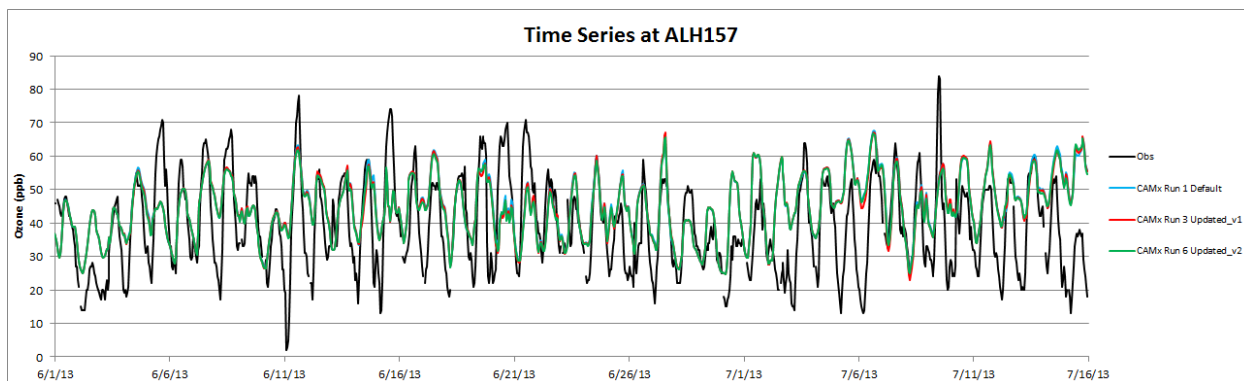
GRS 420 (Tennessee)



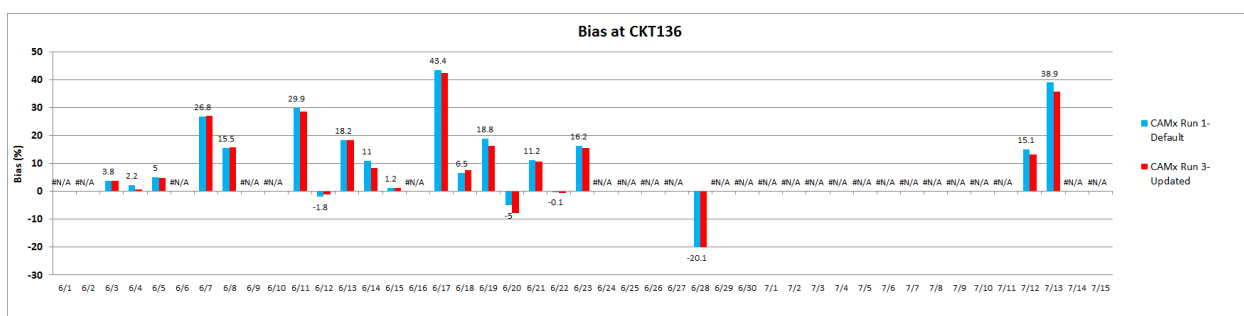
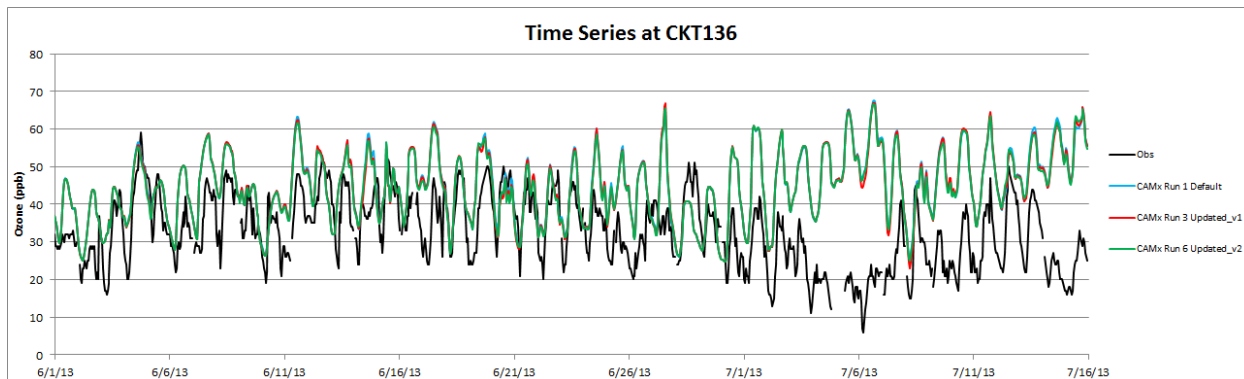
MAC426 (Western Kentucky)



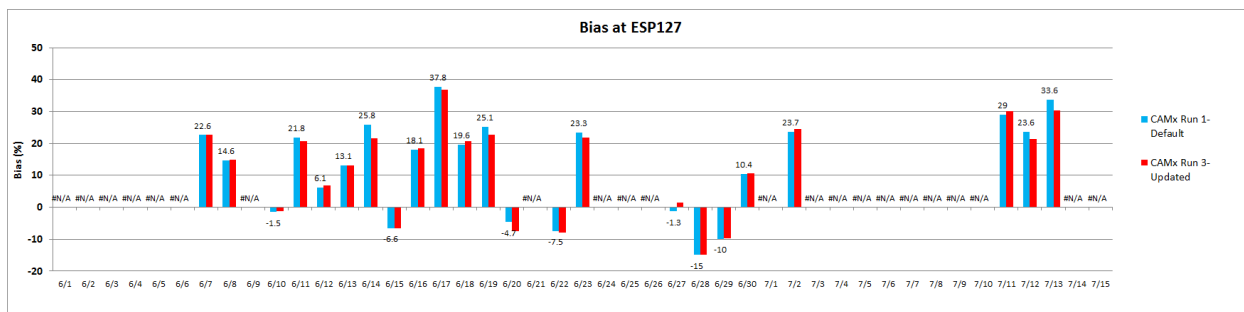
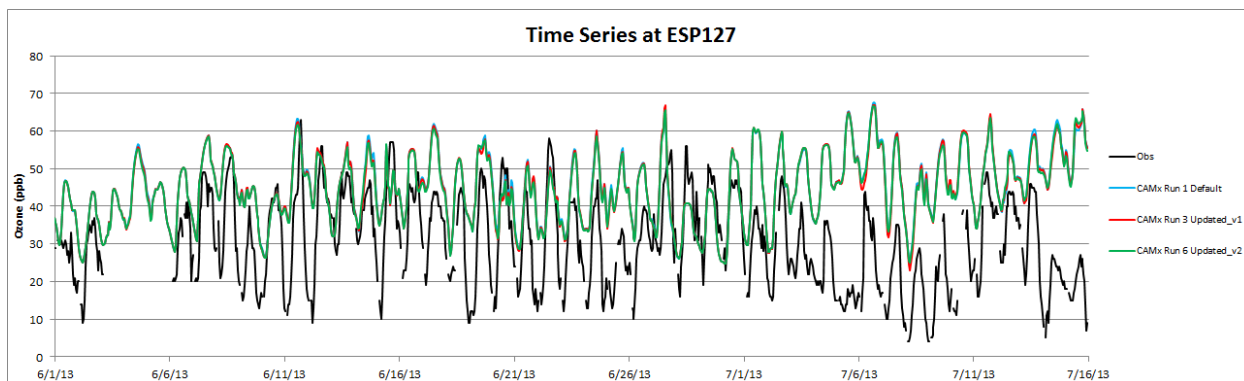
ALH157 (Western Illinois)



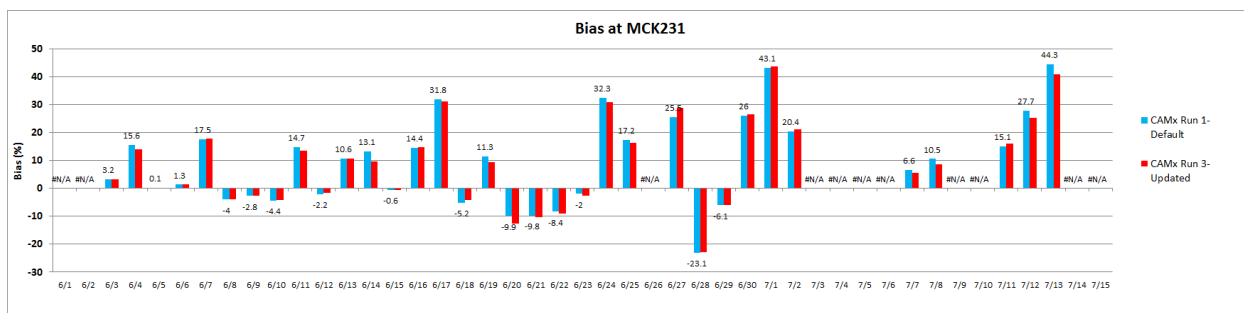
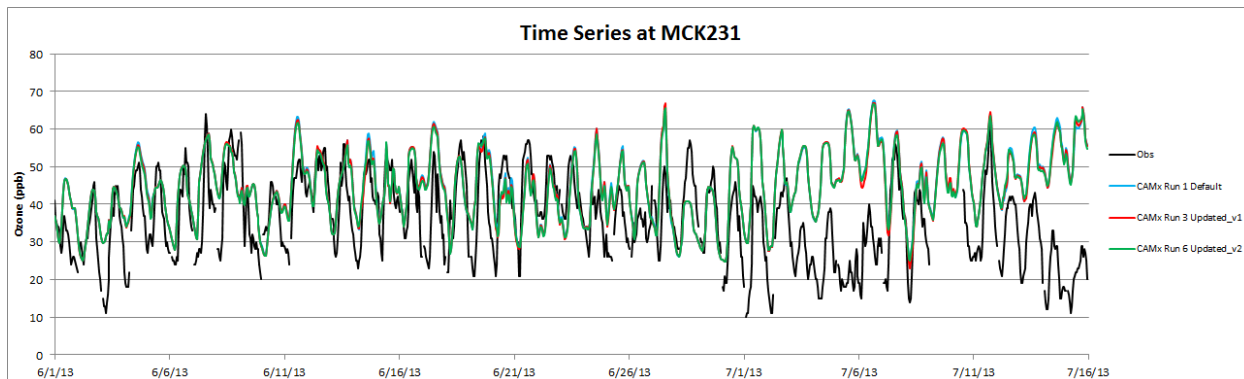
CKT136 (West Virginia)



ESP127 (Tennessee)



MCK231 (Central Kentucky)



PAR107 (West Virginia)

